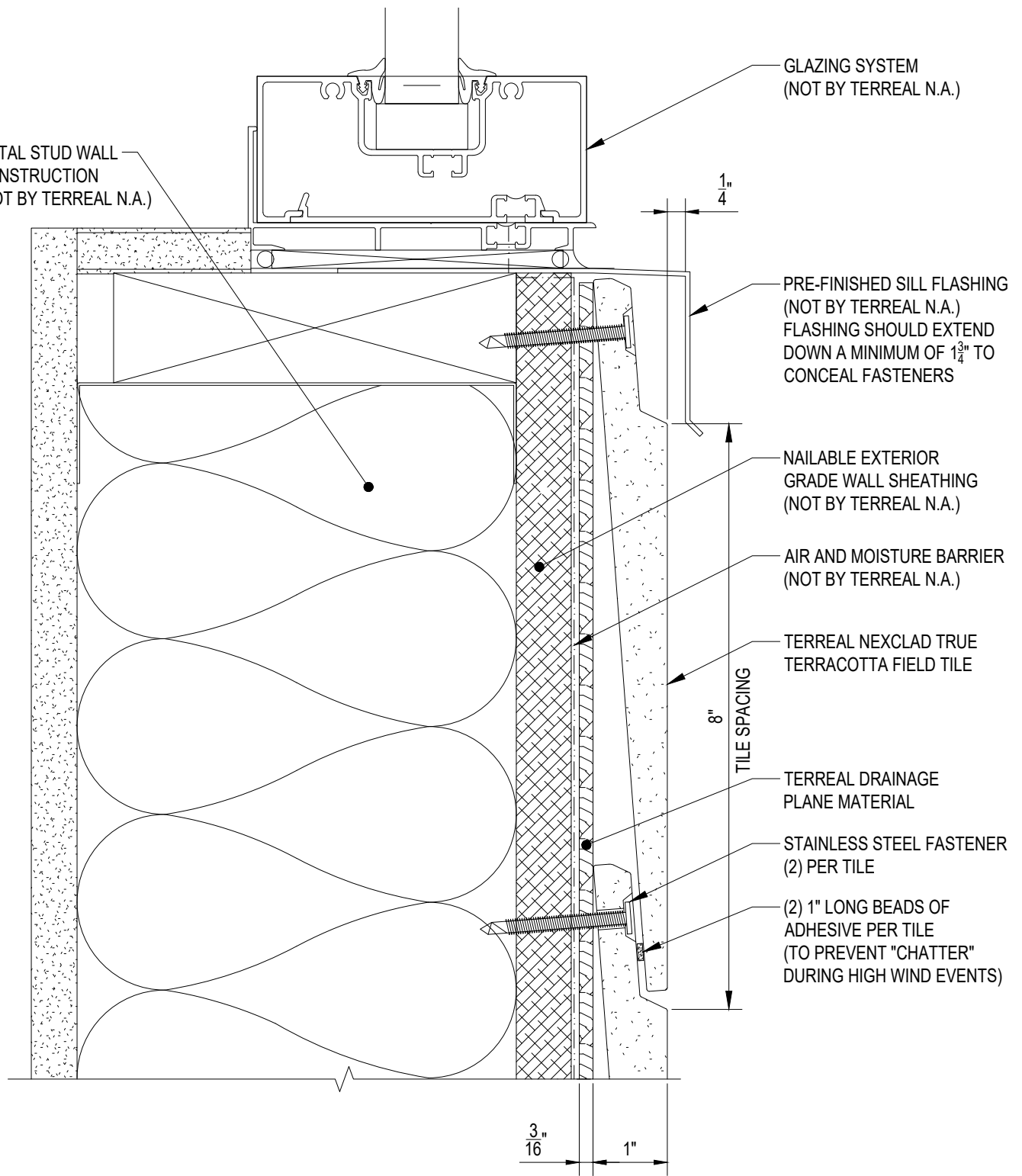


METAL STUD WALL  
CONSTRUCTION  
(NOT BY TERREAL N.A.)

GLAZING SYSTEM  
(NOT BY TERREAL N.A.)



PRE-FINISHED SILL FLASHING  
(NOT BY TERREAL N.A.)  
FLASHING SHOULD EXTEND  
DOWN A MINIMUM OF 1 3/4" TO  
CONCEAL FASTENERS

NAILABLE EXTERIOR  
GRADE WALL SHEATHING  
(NOT BY TERREAL N.A.)

AIR AND MOISTURE BARRIER  
(NOT BY TERREAL N.A.)

TERREAL NEXCLAD TRUE  
TERRACOTTA FIELD TILE

8"  
TILE SPACING

TERREAL DRAINAGE  
PLANE MATERIAL

STAINLESS STEEL FASTENER  
(2) PER TILE

(2) 1" LONG BEADS OF  
ADHESIVE PER TILE  
(TO PREVENT "CHATTER"  
DURING HIGH WIND EVENTS)

3/16" 1"



SYSTEM:	NeXclad True
DETAIL #:	NXT-S003
Description: SILL SECTION DETAIL	
Building Construction:	Metal Stud Wall Framing
Drawing Date:	2021.04.30
Scale:	6" = 1'-0"
Terreal N.A. Reference #:	NeXclad True NXT-S003.

P.O. BOX 309 New Lexington, Ohio 43764  
Telephone: (888) 582-9052 Fax: (740) 342-1906  
www.terrealna.com

The information contained on this drawing is the sole property of Terreal North America. Any reproduction in part or whole without the written permission of Terreal North America is strictly prohibited. Terreal North America reserves the right to modify the configuration of item(s) shown without prior written notice when deemed necessary for product development and/or enhancement.